

ML_30

Profilo in alluminio concepito per rendere invisibile lo spessore del cartongesso. Particolarmente adatto alla costruzione di tagli architettonici e bordi fine cartongesso.

Aluminum profile designed to make plasterboard thickness invisible. Particularly suitable for the construction of architectural cuts and fine plasterboard edges.





Profilo in alluminio concepito per rendere invisibile lo spessore del cartongesso. Particolarmente adatto alla costruzione di tagli architettonici e bordi fine cartongesso.

Aluminum profile designed to make plasterboard thickness invisible. Particularly suitable for the construction of architectural cuts and fine plasterboard edges.

ML_30

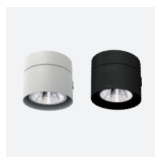
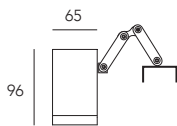
finiture: nero, bianco, alluminio.
finishing: black, white, aluminum.

Compatibilità | *Compatibility*

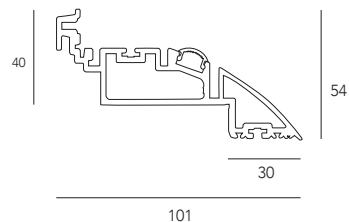
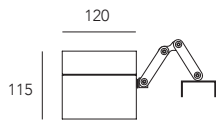
Technical info: pag. 187



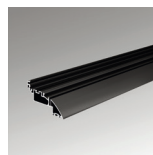
spot virgo 60



spot virgo 120



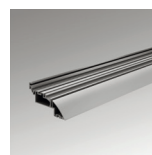
Black



White



Aluminum



Technical info: pag. 212

Finiture | *Finishing*