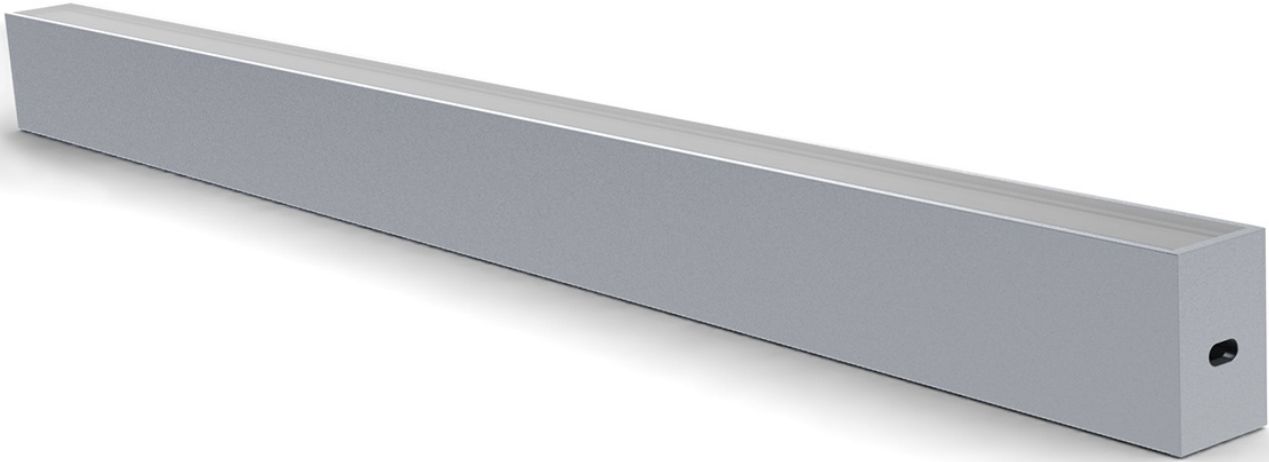


XS3

SURFACE



MONOLINE-XS3

A miniature surface mounted linear LED luminaire manufactured from extruded anodised aluminium, with opal polycarbonate diffusers. Suitable for surface mounting via concealed plastic mounting base.

Each PCB module has an on-board Integrated Controller (IC), for precise constant current control, whilst a Schottky diode provides reverse polarity protection.

A range of LED options are available with a choice of Osram or Lumileds LED, with colour temperatures from 2000K - 6500K and power outputs of 9.6W/m or 14.4W/m.

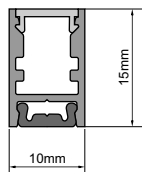
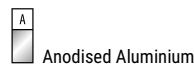
Available in six standard lengths: 450mm, 950mm, 1450mm, 1950mm, 2450mm & 2950mm, which can be cut at 31.25mm intervals. Custom sizes also available upon request.



TECHNICAL

Input voltage:	24VDC [22.5~25VDC]
Current control:	On-board integrated controller (IC)
Reverse voltage protection:	On-board Schottky diode
Operating temperature (Ta):	-35 °C ~ 50 °C
PCB Temperature (Tc max):	<75 °C
Dimmable:	PWM (0/1-10V, DALI, DMX, TRIAC, ELV)
Ingress protection:	IP40

FINISH



XS3

SURFACE

PRODUCT CODE EXAMPLE

PROFILE	DIFFUSER	PCB	WATTAGE	SPECTRUM	LENGTH
XS3	OC	D112	9	D3-827	L4

SPECIFICATION

Profile	Diffuser	PCB	Wattage	Spectrum	Standard Lengths																																										
	OC Opal	C224	9 14	<table border="1"> <tr><td>D3-827</td><td>Osram</td><td>2700K ≥Ra80</td></tr> <tr><td>D3-927</td><td>Lumileds</td><td>2700K ≥Ra90</td></tr> <tr><td>D3-830</td><td>Osram</td><td>3000K ≥Ra80</td></tr> <tr><td>D3-930</td><td>Lumileds</td><td>3000K ≥Ra90</td></tr> <tr><td>D3-835</td><td>Osram</td><td>3500K ≥Ra80</td></tr> <tr><td>D3-935</td><td>Lumileds</td><td>3500K ≥Ra90</td></tr> <tr><td>D3-840</td><td>Osram</td><td>4000K ≥Ra80</td></tr> <tr><td>D3-940</td><td>Lumileds</td><td>4000K ≥Ra90</td></tr> <tr><td>D3-850</td><td>Osram</td><td>5000K ≥Ra80</td></tr> <tr><td>D3-950</td><td>Lumileds</td><td>5000K ≥Ra90</td></tr> <tr><td>D3-857</td><td>Osram</td><td>5700K ≥Ra80</td></tr> <tr><td>D3-957</td><td>Lumileds</td><td>5700K ≥Ra90</td></tr> <tr><td>D3-865</td><td>Osram</td><td>6500K ≥Ra80</td></tr> <tr><td>D3-965</td><td>Lumileds</td><td>6500K ≥Ra90</td></tr> </table>	D3-827	Osram	2700K ≥Ra80	D3-927	Lumileds	2700K ≥Ra90	D3-830	Osram	3000K ≥Ra80	D3-930	Lumileds	3000K ≥Ra90	D3-835	Osram	3500K ≥Ra80	D3-935	Lumileds	3500K ≥Ra90	D3-840	Osram	4000K ≥Ra80	D3-940	Lumileds	4000K ≥Ra90	D3-850	Osram	5000K ≥Ra80	D3-950	Lumileds	5000K ≥Ra90	D3-857	Osram	5700K ≥Ra80	D3-957	Lumileds	5700K ≥Ra90	D3-865	Osram	6500K ≥Ra80	D3-965	Lumileds	6500K ≥Ra90	L1 450mm L2 950mm L3 1450mm L4 1950mm L5 2450mm L6 2950mm
D3-827	Osram	2700K ≥Ra80																																													
D3-927	Lumileds	2700K ≥Ra90																																													
D3-830	Osram	3000K ≥Ra80																																													
D3-930	Lumileds	3000K ≥Ra90																																													
D3-835	Osram	3500K ≥Ra80																																													
D3-935	Lumileds	3500K ≥Ra90																																													
D3-840	Osram	4000K ≥Ra80																																													
D3-940	Lumileds	4000K ≥Ra90																																													
D3-850	Osram	5000K ≥Ra80																																													
D3-950	Lumileds	5000K ≥Ra90																																													
D3-857	Osram	5700K ≥Ra80																																													
D3-957	Lumileds	5700K ≥Ra90																																													
D3-865	Osram	6500K ≥Ra80																																													
D3-965	Lumileds	6500K ≥Ra90																																													
			9.6w/m 14.4w/m		Cuttable at 62.5mm intervals																																										

Other colour temperatures, tunable white, RGB and RGBW available upon request.

ACCESSORIES



XS3-EC Aluminium end cap



XS3-ECH Aluminium end cap with hole

Disclaimer:

Technical data is subject to change without prior notice. The data provide represent typical values. Due to tolerances in the production of components and binning of LEDs, values for lumen output (Lm), colour temperature (CCT) and power (W/m) can vary up to 10%. Electrical and thermal variation also influences the performance characteristics of LEDs