

MONOCOVE-XL

MONOCOVE-XL is an efficient, modular, connectable and seamless miniature linear LED lighting system. The integrated connector system enables the XL to be quickly connected and surface mounted using the concealed mounting brackets.

Manufactured from extruded anodised aluminium, with silver finish, as standard. Custom powder coated options (white / black / RAL) are also available. The opal cover and industry leading Nichia LEDs, provides a miniature, connectable luminaire with uniform 'dot-free' diffuser.

A wide range of LED options are available, with a choice of Nichia, Osram and Lumiled LED. Colour temperatures range from 2000K ~ 6500K with power output options ranging from 19.2w/m ~ 48w/m. Each PCB module has an on-board Integrated Controller (IC), for precise constant current control, whilst a Schottky diode provides reverse polarity protection.

FINISH



TECHNICAL

Input voltage:	24VDC [22.5~25VDC]
Current control:	On-board integrated controller (IC)
Reverse voltage protection:	On-board Schottky diode
Operating temperature (Ta):	-35 °C ~ 40 °C
Dimmable:	PWM (Pulse-Width Modulation)
Ingress protection:	IP40



SPECIFICATION

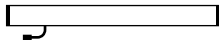
XL	B	OC	N112	/24	N4-827K	Lumens per metre				2000				
Profile	Colour	Diffuser	PCB	Wattage	Spectrum	/19	/24	/33	/48	Length				
A Aluminium W White B Black		OC Opal	N112	/19	19.2w/m	N4-820K	2000K ≥Ra80	1016	1237	1777	2455	125	125mm	
				/24	24.0w/m		N4-920K	2000K ≥Ra90	814	987	1425	1960	250	250mm
				/33	33.4w/m		N4-822K	2200K ≥Ra80	1099	1338	1923	2657	500	500mm
				/48	48.0w/m	N4-922K	2200K ≥Ra90	880	1068	1542	2120	1000	1000mm	
						N4-825K	2500K ≥Ra80	1203	1465	2105	2908	1500	1500mm	
						N4-925K	2500K ≥Ra90	955	1158	1673	2300	2000	2000mm	
						N4-827K	2700K ≥Ra80	1407	1713	2462	3401	2500	2500mm	
						N4-927K	2700K ≥Ra90	1171	1422	2049	2824	3000	3000mm	
						N4-027K	2700K ≥Ra95	937	1137	1640	2257			
						N4-830K	3000K ≥Ra80	1449	1764	2536	3502			
						N4-930K	3000K ≥Ra90	1204	1463	2108	2904			
						N4-030K	3000K ≥Ra95	957	1162	1675	2307			
						N4-835K	3500K ≥Ra80	1483	1804	2594	3583			
						N4-935K	3500K ≥Ra90	1233	1498	2159	2974			
						N4-035K	3500K ≥Ra95	978	1187	1711	2356			
						N4-840K	4000K ≥Ra80	1487	1810	2601	3593			
						N4-940K	4000K ≥Ra90	1246	1513	2180	3004			
						N4-040K	4000K ≥Ra95	990	1202	1733	2386			
						N4-850K	5000K ≥Ra80	1554	1894	2706	3756			
						N4-950K	5000K ≥Ra90	1323	1608	2312	3188			
						N4-050K	5000K ≥Ra95	1076	1310	1882	2602			
						N4-857K	5700K ≥Ra80	1499	1828	2611	3624			
						N4-957K	5700K ≥Ra90	1315	1597	2297	3168			
						N4-865K	6500K ≥Ra80	1499	1828	2611	3624			
						N4-965K	6500K ≥Ra90	1306	1588	2283	3148			

Other colour temperatures, tuneable white, RGB and RGBW available upon request.

MODULE TYPE

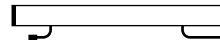
STAND-ALONE

Luminaire - L
Endcaps at both ends

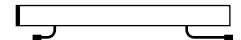


CONTINUOUS LINE

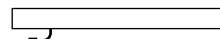
Start module - S
Endcap at the start



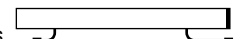
Middle module - M
No endcaps



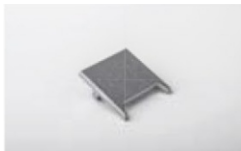
End module - E
Endcap at the end



Full module - F
Endcaps at both ends



ACCESSORIES



XL-EC End cap



XL-SMB Mounting bracket



XL-MAG Magnetic bracket



XL-AMB Adjustable bracket

Disclaimer:

Technical data is subject to change without prior notice. The data provide represent typical values. Due to tolerances in the production of components and binning of LEDs, values for lumen output (Lm), colour temperature (CCT) and power (W/m) can vary up to 10%. Electrical and thermal variation also influences the performance characteristics of LEDs